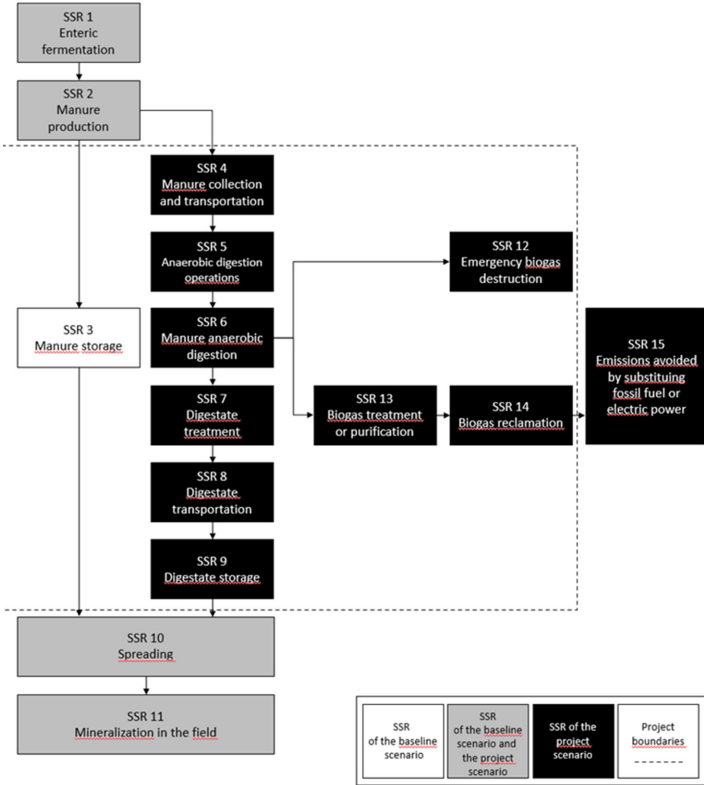


**Figure 1: Illustration of project boundaries**



**Explanatory note:** The baseline scenario shows the GHG sources, sinks and reservoirs (SSRs) that are present in the absence of any project eligible for the issuance of offset credits. The project scenario shows the SSRs that are present when a project is implemented. Not all of these SSRs necessarily form part of the project eligible for the issuance of offset credits; only the SSRs within the project boundaries must be considered.